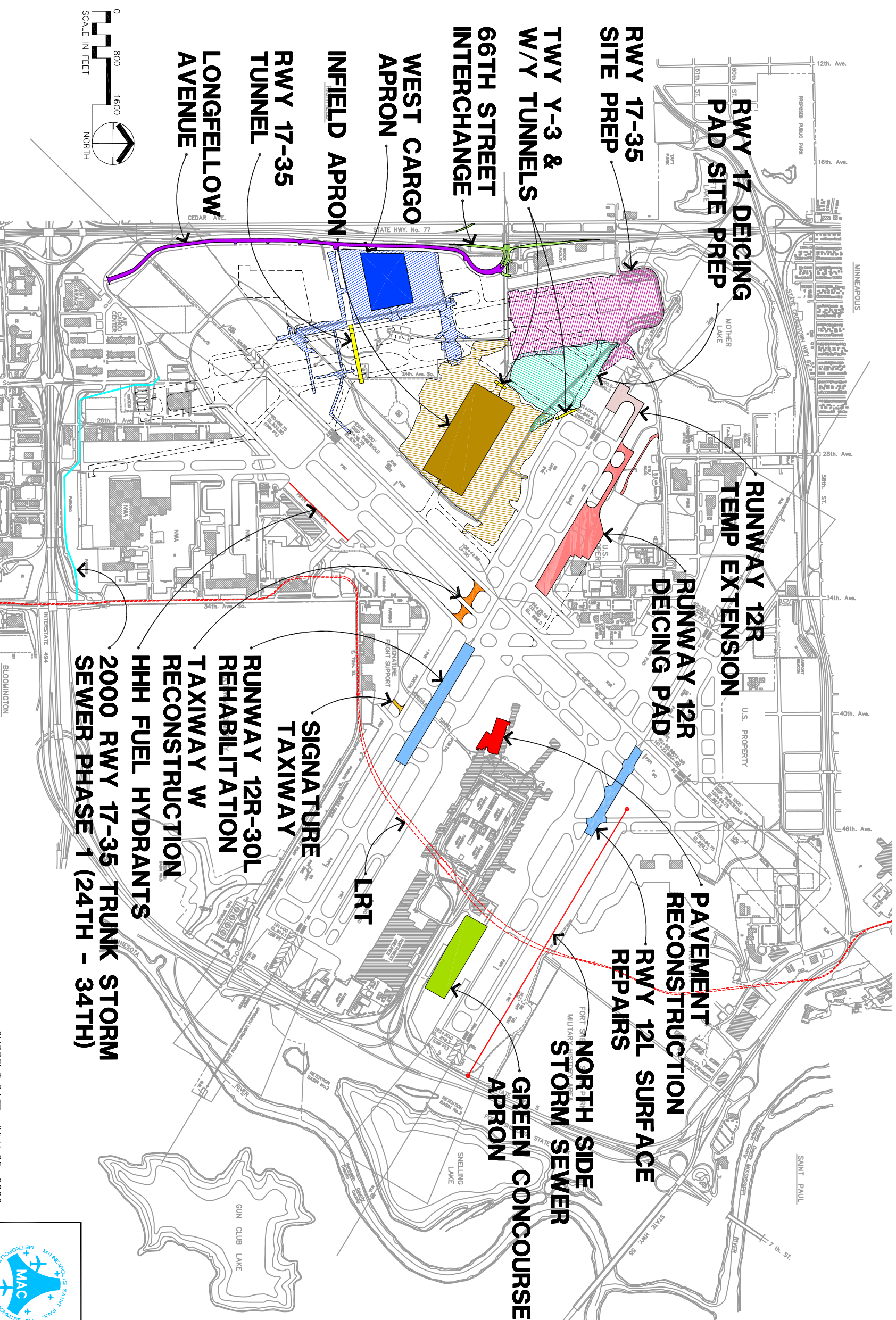


2000 AIRFIELD PROJECTS

MINNEAPOLIS - ST. PAUL INTERNATIONAL AIRPORT

(WOLD - CHAMBERLAIN FIELD)



- UTILITY MODIFICATIONS
- ELECTRICAL SYSTEM COMPUTERIZATION

FOR GENERAL REFERENCE ONLY
SUBJECT TO CHANGE WITHOUT NOTICE

Metropolitan
Airports
Commission

GENERAL OFFICES
6040-28TH AVENUE SOUTH
MINNEAPOLIS, MINN. 55450

